

Ka Caawinta Ilmahaaga Imtixaanka Guriga Qiimeynta Koritaanka NWEA MAP

Bilowga sannad dugsiyeedkan waa ka duwan yahay...

- ...Laakiin waxyaabaha qaar baa isku sidi doona, waxay uun ku dhici doonaan guriga halkii ay ka ahaan lahaayeen fasalka
- Hal tusaale ayaa loogu talagalay aqoonyahannada CMSD ee fasallada 1 illaa 10 si ay u qaataan imtixaanka loo yaqaan qiimeynta kobcinta NWEA, ama "imtixaanka MAP"
- Imtixaankan waxaa la qaadaa dhowr jeer inta lagu gudajiro sanad dugsiyeedka waana aalad muhiim ah oo u adeegsado cunugaaga macalinka inuu qorsheeyo tilmaamaha ku saleysan natiijooyinka

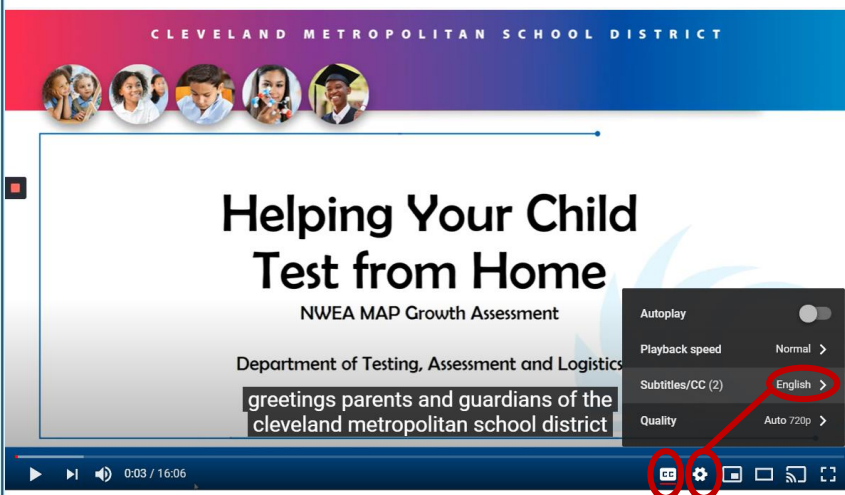
Waa maxay imtixaanka Kobaca MAP?

- Waa tijaabo kombiyuutar ku saleysan
- Ardaydu waxay qaataan laba imtixaan, hal akhris, hal xisaab
- Waxa jira iskudhafan noocyo badan oo kala xulasho ah iyo noocyo kale oo su'aal ah oo ka caawinaya ilmahaaga inuu muujiyo waxay yaqaaneen

Sidee ayuu baaritaanka u shaqeeyaa?

- Ardayda waxay ka jawaabaan 40-50 su'aalaha la-qabsiga
- Waxay ku qaadan karaan ilaa 90 daqiiqo hal fadhi. Waxay qaadan karaan ilaa laba maalmood inay ku dhammaystaan imtixaanka
- Xusuusi cunuggaaga in ay caadi tahay haddii aysan garaneyn jawaabta (oo aadan u gargaarayn) - ujeedka oo dhan waa in la ogaado waxa ay diyaar u yihiin inay bartaan xiga


Waa tan sida aad uga caawin karto cunuggaaga inuu guriga ku baarto:

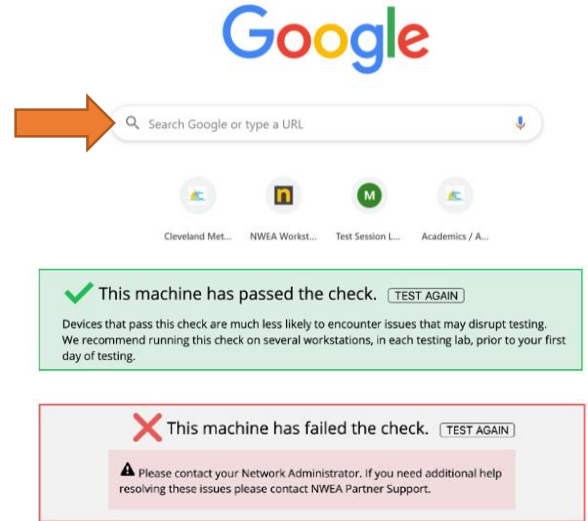


- Fadlan daawo fiidiyowgan oo sharxaya sida qoysasku ugu diyaarin karaan imtixaanka guriga
- <http://bit.ly/cmsdtesthome>
- Muuqaalkan fiidiyowga ah waa dhowdahay oo cinwaan hoosaadyada ayaa si otomaatik ah loogu tarjumi karaa luqado badan

Tallaabada 1aad

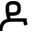
Hubso in kombuyuutarka loo isticmaali karo tijaabinta

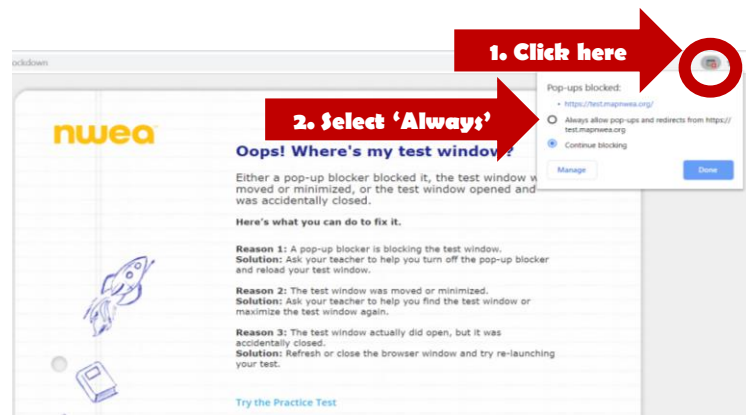
- Fur kalfadhiga biraawsarka bog furaha ee Google Chrome adigoo gujinaya 
- Nooca: check.nwea.org halkaasoo ay ku taal "Raadi Google ama ku qor URL"
- Goobtani waxay tijaabin doontaa kumbuyuutarkaaga - haddii uu dhaafo, kombiyuutarka ayaa diyaar ah
- Hadaan kombiyuutarka gudbin, oo uu yahay kumbuyuutar CMSD, wac CMSD DoIT taleefanka 216.838.0440 si aad caawimaad uga hesho



Tallaabada 2aad

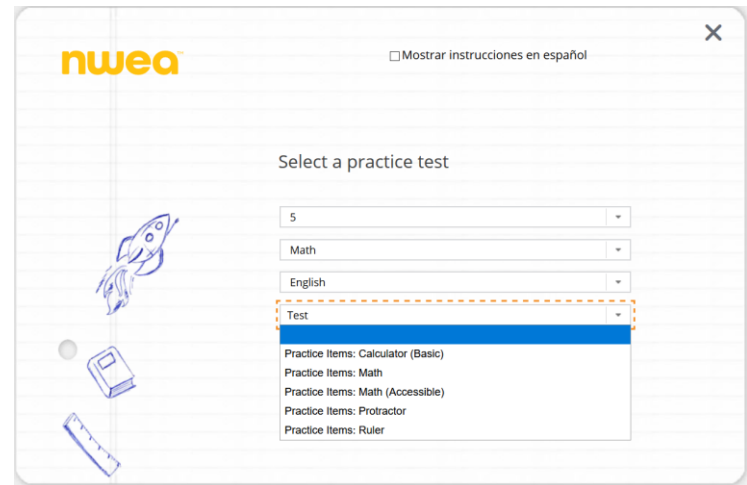
U oggolow cunugaada inuu ku celceliyo qaadista imtixaanka

- Tababbarku wuxuu cunuggaaga ka caawiyaa inuu ku qanacsanaado wareejinta shaashadaha imtixaanka oo uu barto noocyada su'aalaha la weyddiiyo
- Fur kalfadhiga biraawsarka bog furaha ee Google Chrome adigoo gujinaya 
- Nooca: test.mapnwea.org halkaasoo ay ku taal "Raadi Google ama ku qor URL"
- Waxaa laga yaabaa inaad hesho "Oh!" farriin ku saabsan xannibaadda is-qab-qabsiga. Raac tilmaamaha si aad ugu oggolaato soo-qaaditaanno



Ku bilaabida imtixaanka barista

- Xulo 'Isku day Imtixaanka Xirfadda'
- Shaashadda xigta, ku qor erayga:
- koraan
- Labada isticmaale iyo erayga sirta ah, dhagsii fallaarta buluugga ah
- Shaashadda xigta, ku xulo fasalka cunuggaaga iyo maaddada (Akhriska ama Xisaabta)
- U dooro Ingiriisiga luqadda oo dooro imtixaanka
- Calaamadee 'Text to Speech' sanduuqa (xisaabta kaliya), dhagsii fallaarta buluugga ah



Inaad barato xariirka imtixaanka

- Guji fallaadha buluugga ah ee shaashadda hoose si aad ugu dhaqaaqdid su'aasha soo socota. Ardayda kuma noqon karaan su'aalaha hore.
- Adeegso barta taraafigga ee sare ee shaashadda si aad u maqashid su'aalaha (xisaabta kaliya), balaariso shaashadda, ama isticmaal aaladda



100%



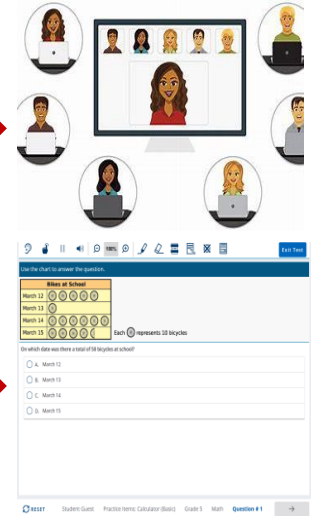
Tallaabada 3aad

Ku caawi cunuggaaga maalinta imtixaanka

- Hubso in ilmahaagu helo nasiino fara badan habeenka ka hor oo quraacdo aroorta
- U yeel meel ay ku tijaabiyaan oo aamusan / ka jeedisa wax jeedin ah
- Hubso inay hayaan warqad xoqan iyo qalin
- Kombuyuutarka, cunugaada wuxuu ubaahanyahay inuu furo labo TWO Google Chrome daaqadaha furaha
 - Fiidiyowga ku wada sheekaynta fiidiyowga macallinka
 - Imtixaanka MAP - - bar.mapnwea.org

1. Video chat

2. MAP test



Qaadashada iyo dhammaynta imtixaanka

- Mar alla markii ilmahaagu bilaabo imtixaanka, u oggolow inay ku shaqeeyaan xawaaraha iyaga u gaarka ah
- Xusuusnow, dib ugama noqon karaan gadaal, kaliya u gudub su'aasha soo socota
- Haddii ilmahaagu u baahan yahay biririf, waa inuu u sheegaa macallinka isaga oo isticmaalaya sheekaysiga fiidiyaha
- Mar alla markii ilmahaagu ka jawaabo su'aasha ugu dambaysa, imtixaanka wuu dhammaystiri doonaa oo dhibcahoda ayaa la muujin doonaa
- Xir kalfadhiga biraawsarka baarida oo dib ugu soo celi macallinka adoo isticmaalaya wada hadalka fiidiyowga wixii tilmaamo dheeri ah

Suzanne Banks
Congratulations, you finished the test!

The total test time was: 00:17:10
Date: August 6, 2020 Test Name: Demo Growth: Math 2-5

CONFIDENTIALITY NOTICE: This information may be confidential and legally protected from disclosure.
© NWEA 2018. MAP is a registered trademark. NWEA, MAP Growth and MAP
2-5 are trademarks of NWEA in the U.S. and in other countries.

nwea